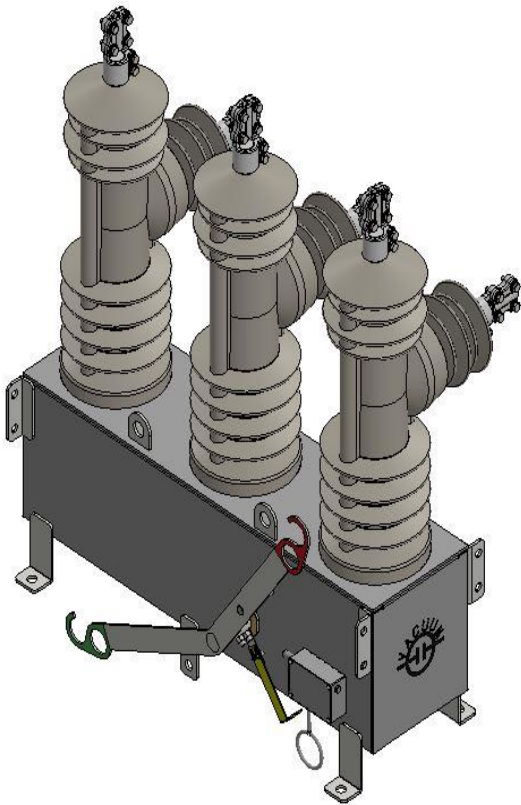


PRODUCT CATALOG



Quality stability !

Customer first !

**SOLID INSULATED
LOAD BREAK SWITCH**

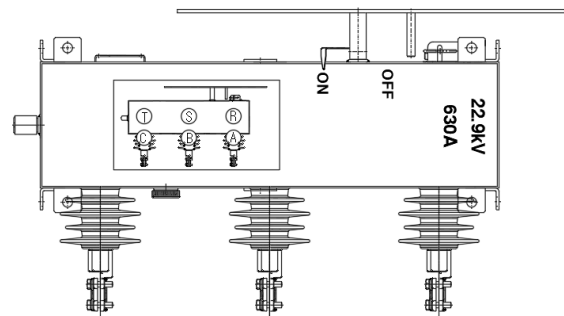
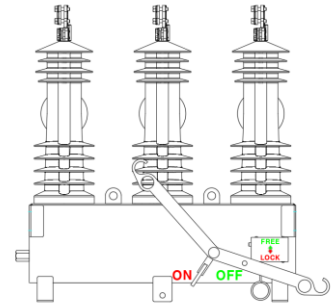
Solid Insulated Load break switch for overhead line

Introduction

- Delcoco Solid insulated load break switch was produced base on many experience
- Load break switches high electrical ratings ensure operation even under heavy loading or fault conditions.
- mechanical construction that enables them to perform reliably in all weather conditions

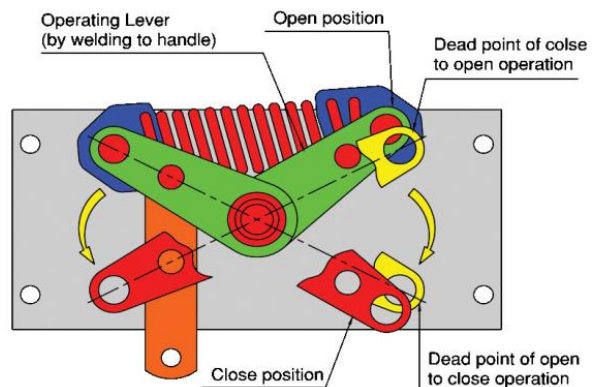
Characteristic Key point

- Wide operating temperatures range
- High number of breaking operations at rated normal current
- Compact design
- Reliable position indicator
- Vacuum interrupter system
- Simple operation mechanism



Operating Mechanism

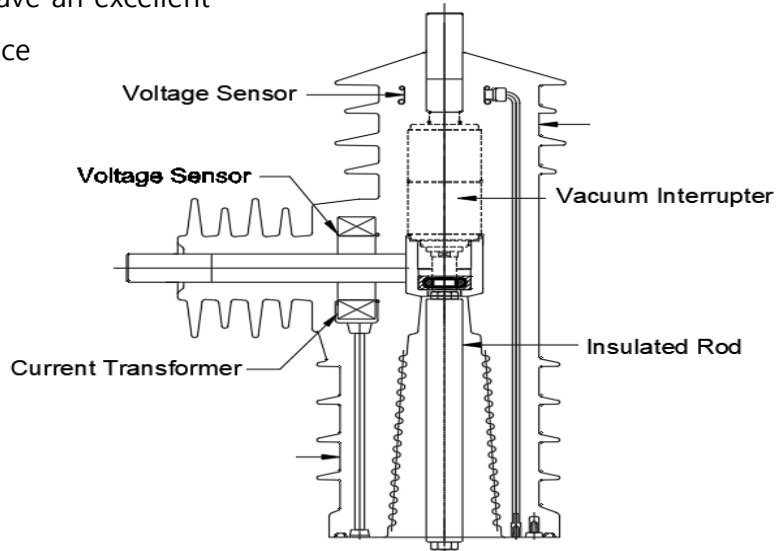
- The switching contacts are driven by an over-center spring mechanism to ensure that the operating speed is always constant, independently of the speed of the operator. The mechanism can be driven by either a manual hookstick, electric motor or ground actuator (optional)



Solid Insulated Load break switch for overhead line

Switch Internal composition

- Load break switch tanks material is stainless steel and fill in N₂ GAS
- Vacuum Interrupter system have an excellent arc-extinguishing performance



Solid Insulated Load break switch for overhead line

Control cabinet

► Fault detection

Fault Detection (phase / Earth / SEF)

Cold load pickup & Inrush restraint

Open line detection & phase sync fail detection (Va-Vr)

Auto Sectionalizing

► Measurement

Voltage(Source/Load) & Current (3-phase RMS / True RMS)

Power (kVA, kW, kVar) & Energy (kWh, kVarh)

Power Factor, Frequency, Phase Angle

Harmonics (up to 32nd) & THD (Total Harmonic Distortion)

► Control

Control Position : Local / Remote

Switch Control : Open / Close (SBO / DO) after Select

FI (Fault Indication) Manual Reset, Battery Test

► Status Monitoring

Switch Status : Open / Closed

Control Position : Local / Remote

Fault Indication (A/B/C/N/SEF/ Reverse Dir.)

Open Line & Sync Fail, Hot Line, Inrush Detected

Switch Handle Locked & Gas Pressure Low

External AC Power Loss, Enclosure Door Open

Battery Overdischarged & Charging Circuit Error

System Error (Self Diagnosis Result)

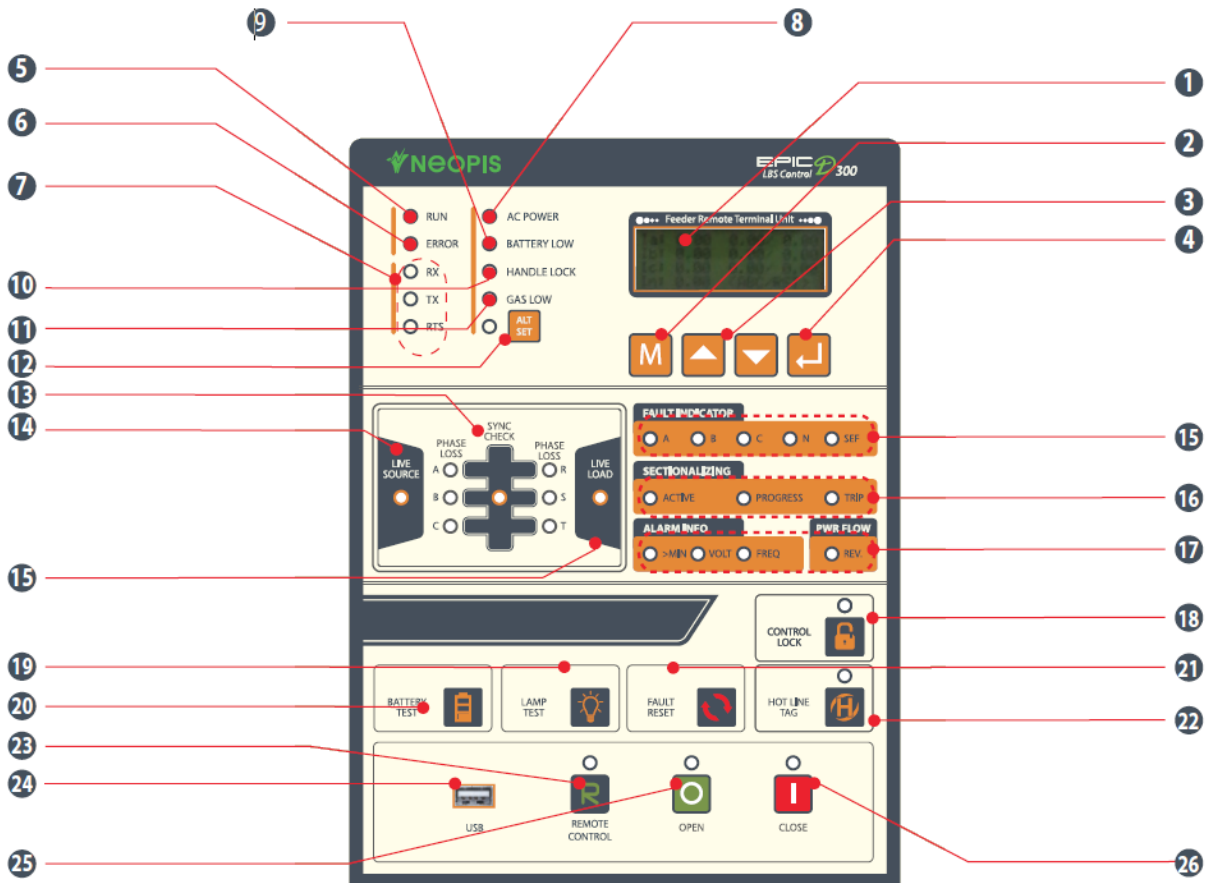


► Counter

FRTU restart count, switch trip count

Fault count

Solid Insulated Load break switch for overhead line



- | | |
|--|--|
| 1 LCD | 14 Hot Line LED's (Load - side) |
| 2 Menu Button | 15 Fault Indicator LED's (A/ B /C / N/ SEF) |
| 3 Up / Down (LCD Menu Operation) Button | 16 Sectionalizing LED's (Active/Progress/Trip) |
| 4 Enter (LCD Menu Operation) Button | 17 Alarm Information & Power Flow LED'S (FWD/ REV) |
| 5 DSP Run LED | 18 Control Lock Button & LED |
| 6 System Error (Self Diagnosis) LED | 19 Lamp Test Button |
| 7 Communication Status LED's (RX/TX/RTS) | 20 Battery Test Button |
| 8 External AC Power On LED | 21 Fault Reset Button |
| 9 Battery Test Result LED | 22 Hot Line Tag Button & LED |
| 10 Handle Lock LED | 23 Local / Remote (Control Position) Button & LED |
| 11 Gas Low LED | 24 USB Setting & Maintenance Port |
| 12 Alt Set Button & LED | 25 Open (Switch Control Command) Button & LED |
| 13 Sync Check LED | 26 Close (Switch Control Command) Button & LED |

Solid Insulated Load break switch for overhead line

Ratings

Rating			
Rated voltage	12	24	kV
Rated continuous current	400/630	630	A
Rated making current	32.5	32.5	kA _{peak}
Short time withstand current (3s)	12.5	12.5	kA _{rms}
Mechanical operations	5,000	5,000	times

Insulation level

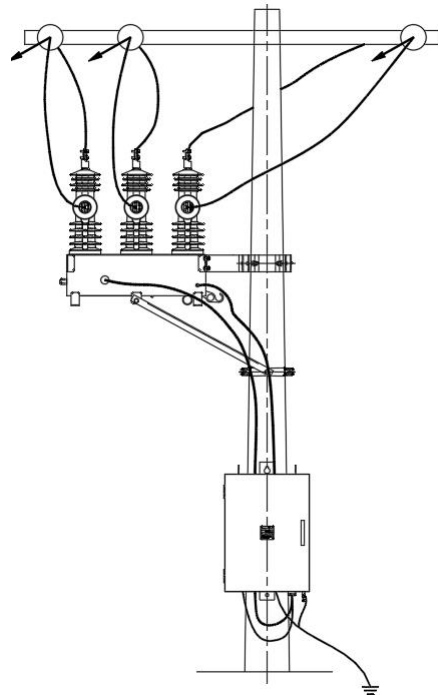
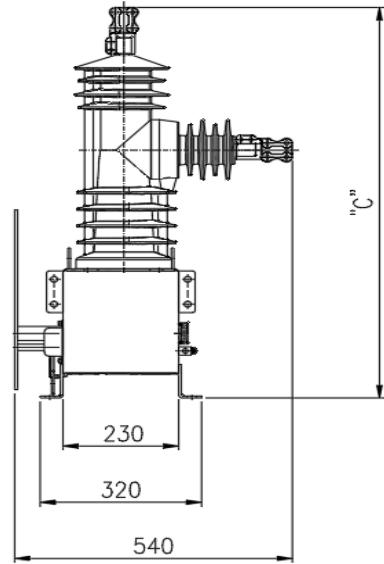
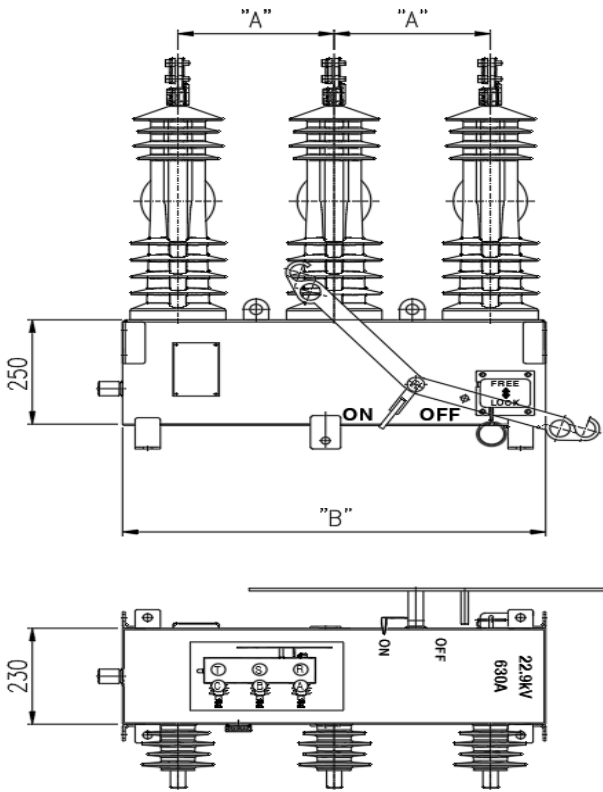
Rated lightning impulse withstand voltage	75	150	kV
Rated power frequency withstand voltage	42	60	kV /1min

Service condition

Ambient temperature	-25 to 50	°C
Humidity	0 to 100	%
Altitude meters	3000	M

Solid Insulated Load break switch for overhead line

Dimension



section	12kV	24kV
"A"	210	310
"B"	640	840
"C"	847	937

DELCOCCO

301, Mado-ro, Mado-myeon, Hwaseong-si, Gyeonggi-do, 18544, Korea
www.delcoco.co.kr